

# Party Rock Anthem (LMFAO)

Bass Tuba 2

A



B



C



17



D



25

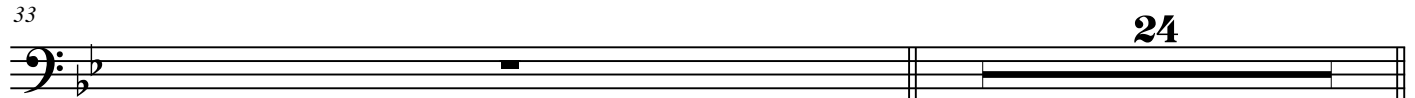


E



33

F



## 2

58

A musical score snippet for a bass staff. The key signature has one flat (B-flat). The melody consists of eighth notes and quarter notes, often beamed together in pairs or groups of four. There are several ties between notes across bar lines. The notes are primarily in the lower register of the staff.

62

A musical score snippet for a bass staff. The key signature has one flat (B-flat). The melody consists of eighth notes and quarter notes, often beamed together in pairs or groups of four. There are many slurs over the notes, indicating phrasing. The notes are mostly in the lower register of the staff.

66

The bass line of 'The Rose Tree' is written in bass clef with a key signature of one flat (B-flat). The melody consists of four measures, each containing a triplet of eighth notes. The notes are G2, F2, and E2 in the first measure; D2, C2, and B1 in the second; A1, G1, and F1 in the third; and E1, D1, and C1 in the fourth. The final note, C1, is held for a longer duration, indicated by a horizontal line below it.

70

[illegible]

74

[illegible]

78

The bass line of 'The Rose Tree' is written in 3/4 time, key of B-flat major. It consists of four measures. The first measure contains a half note B-flat and a quarter note G. The second measure contains a half note F and a quarter note E. The third measure contains a half note D and a quarter note C. The fourth measure contains a half note B-flat and a quarter note A. The melody is written in treble clef, and the bass line is written in bass clef.

82

[illegible]

86

The bass line of 'The Rose Tree' is written on a single staff in bass clef with a key signature of one flat (B-flat). The melody consists of eighth and sixteenth notes, with some notes beamed together. The final measure ends with a double bar line.